

THE PROFESSIONAL
MANUFACTURER OF
DIAMOND CBN WHEELS



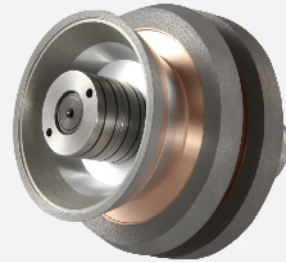
INNAGRIND
Efficient Grinding Solutions

I Resin bonded Wheel



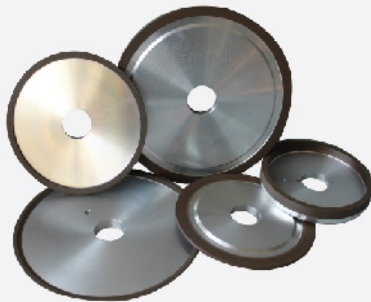
01 CNC Fluting Wheel

Polyimide bond wheel used on CNC grinders to flute, gash or clearance angles of tungsten carbide or HSS drills, mills and reamers. Machines: Walter, Anca, EWAG etc.



02 Hybrid Wheel on CNC Flute

For large stock removal and high feed speed, low machine load; used for both new tool manufacturing and re-sharpening on CNC tools and Cutter Grinders.



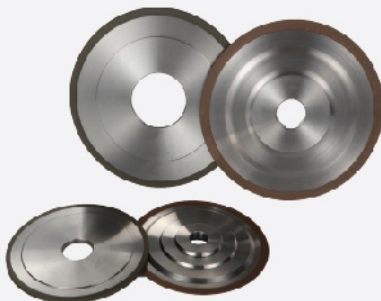
03 Wood working

Two applications: Standard sharpening and CNC production grinding. For carbide tipped saws, circular saws and band saws. Single, Dual, Triple grits are available. Machine: Akemat, Vollmer, Walter etc.



04 Face wheel with Bakelite body

Bakelite body is elastic and light weighted to provide higher surface finishing and lessen the machine load. Widely used for production or re-sharpening of TCT saw blades .



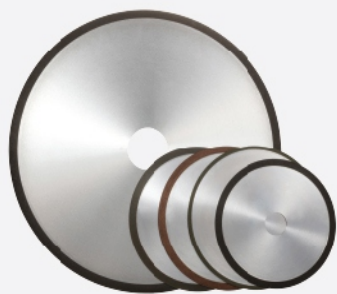
05 Cold Saw Wheel

Tooth-form grinding with the best edge stability. Used on Tempo ECT and Loroch CNC.



06 Dense tips Saw Blade grinding wheel

The wheel allows face grinding of saw blade with narrow tooth gaps. The new layer design enables very sharp angles of the grinding layer.



07 Cut-Off Wheel

Cutting off tungsten carbide, quartz, glass, HSS, hardened steel and etc. The wheel diameters are 3"-16" and thickness is from 0.019"-0.1", for both wet and dry cutting.



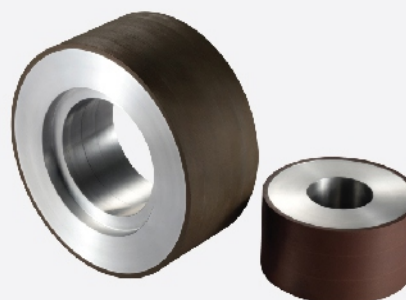
08 PG Wheel

Precision grinding in electronic mold industry; suitable for slotting and grooving carbide, HSS, profile grinding and other precision surface grinding. Machine: Wasino, Amada, Petewe etc.



09 Abrasives Body Wheel

Special body to provide better heat dissipation, suitable for deep feed, high stock removal in Die & Tooling industry.



10 Centerless wheels

For TCT bars, bearing parts, auto parts, cylinders and engine valves. It divides into roughing type and finishing type. Bakelite body is also available upon customer's demand.



11 Surface Wheel with Aluminum body

For surface and cylindrical grinding to meet various applications. Roughing and finishing wheels available.



12 Surface Wheel with Bakelite body

Bakelite body is flexible and light weighed to provide higher machining precision with less machine load.



13 Super-finishing wheel

Common application: used for super finishing of carbide material. The grit could be 4000 mesh minimum. Mirror finishing effect can be achieved on workpiece surface.



14 Double Disc

Double disc wheels are for grinding the surfaces of bearings, transmission gears, compressor parts, vane and rotors. Machine: Koyo.



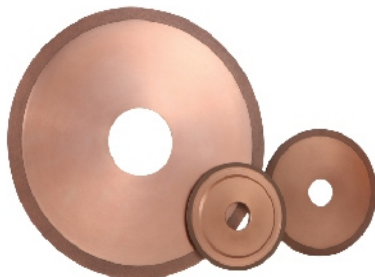
15 Tool Room Wheel

Used on the profile grinder and tool grinder with general purpose, suitable for all tool room uses, such as re-sharpening drill bits and saw blades, cutting off the workpieces etc. 1A1, 11V9, 6A2, 12V9 are popular shapes.



16 Paper knife Wheel

CBN wheels to dry grind knives made from HSS, hardened steel and alloy steels etc in paper/tissue making industry.



17 EC wheel

Special for electrochemical grinding with good surface finish and long using life.



18 Resin wheel for insert

For peripheral grinding carbide, ceramic, cermet inserts. Features of wheel: good flatness, strong grinding and durability.

II Vitrified bonded Wheel



01 CBN Internal Wheel(Compressor)

For internal grinding of vane, piston, cylinder of air conditioner compressor. Also used for ID grinding on bearing. Shaft and non-shaft types available.



02 CBN Internal Wheel (Auto)

Used for forming grinding on ball-joints and ID grinding on window hole in Auto industry.



03 Crankshaft & camshaft Wheel

Provide high speed, low heat and high efficient grinding on Auto camshafts, crankshafts. Machine: Junker, Toyota, Schaudt etc.



04 Double Disc

Perform grinding and lapping in one process. Used for Auto parts, Mechanical seal parts and air compressors. Machine: Petervolters.



05 Vitrified wheel for PCD/PCBN insert

For sharpening PCD/PCBN inserts with high efficiency, high machining accuracy, short grinding time, good tool profile stability and longer using life. Machine: Ewag, Wendt etc.



06 Bruting Wheel

For bruting natural diamond with high performance and rate ratio, less chipping and premium surface finishing.

III Metal bonded Wheels



01 Cut off wheel

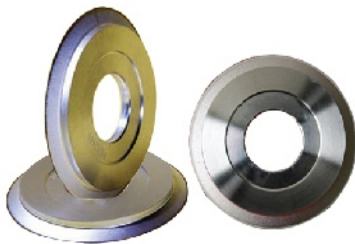
For cutting glass, ceramic, magnetic materials, with long using life, good shape retention and no chipping.



02 Glass wheel

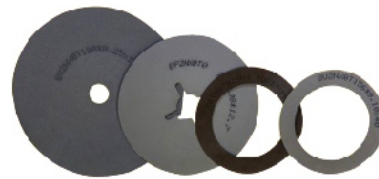
For grinding all kinds of glass, such as general glass, micro-crystalline glass, PV glass, DPD and LCD.

IV Semi conductor wheel



01 Dicing Blade With Hub

The hub makes the blade more rigid and keep the edge from breaking. Used for the cutting and dicing wafers of silicon, glass and GaP etc.



02 Dicing Blade Without Hub

Ultra thin and precision diamond blade, for dicing and slitting of semi-conductors, electronic components and ceramic etc. The thinnest wheel can be 0.015mm thick.



03 Metal & Resin cutting wheel with steel core

Precision cutting wheels with higher rigidity, for high-load cutting, deep cutting, V-shape or R-shape purpose.



04 Metal & Resin cutting wheel without core

Hubless and highly precise blade, for wafer, magnetic heads, glass and the ceramic in electronic industry. The thinnest wheel can be 0.05mm thick.



05 Back thinning wheel

For thinning and finishing silicon and sapphire wafer, stable quality and free cutting, without chipping and scratching.



06 Electroplated Points

Used for the screen glass and panel of cell phone. It features high precision and high efficiency.



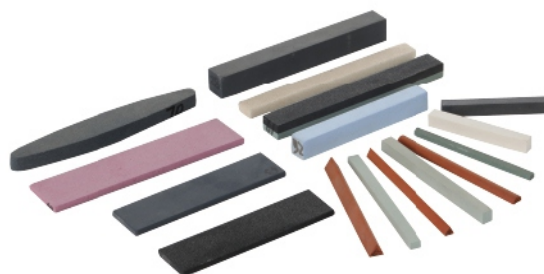
07 Electroplated Diamond/ CBN Tools

Electroplated tools can be made in various shapes, so it will be an excellent option when the tool is with complex profile. Free cutting, non-truing and dressing, less heating.



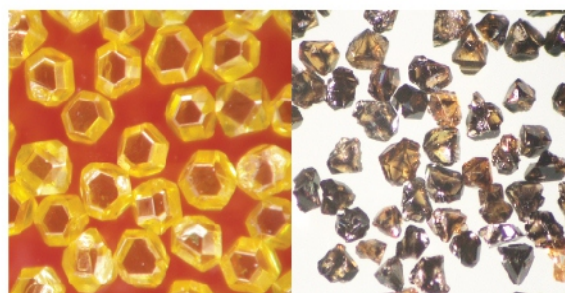
V Diamond Dressing Roll

For dressing conventional wheels with high precision and stable profile.



VI Dressing Stick

Truing, cleaning and dressing diamond, CBN and conventional abrasive wheels. Abrasive grain available: Aluminum oxide, Silicon Carbide.



VII Diamond&CBN powder

Resin bond diamond mesh/micron; metal bond diamond mesh/micron; saw grit; Poly; CBN Mesh/Micron available. Used for Resin, Metal, Vit, electroplated tools.

Company Profile

With 40 years experience in Superabrasive industry, Innogrind Abrasives is a very reliable partner in supplying a full range of Diamond and CBN grinding wheels for many industries: Woodworking, Tool&Cutter, Automobile, Round Tool manufacturing, Tool&Die, Bearing, Paper-Making, Aerospace, Semi-Conductor, Glass, Ceramics and many more.

Our scale: 30,000pcs of Diamond&CBN grinding wheels production per month. Thousands of standard wheels are in stock and custom made wheels are always available

Our technology: Our main manufacturing process and technology are from US, Europe and Japan. Part of our technology is also from China developed in our R&D Center. The 12 engineers in our R&D Center work continually on bond formulations and wheel applications.

Our quality management: With an ISO9001 quality management Team and state of the art testing equipment in our plant and Laboratory, our products are manufactured with strict quality procedures and tested carefully to assure consistent quality.

Our service: Our goal is to have 100% customer satisfaction. To gain this, Innogrind always provides the best individual service.

We look forward to handling your diamond and CBN grinding wheel requirements.



CÔNG TY TNHH INNOGRIND VIỆT NAM INNOGRIND VIETNAM CO., LTD

Head office: Head office:Số 3, ngõ 26/9. Đỗ Quang Str.
Tổ 15, Phường Trung Hòa,
Quận Cầu Giấy, TP. Hà Nội, VN

Tel : (+84) 82.999.2316

MST : 0108986545

Email : info@innogrindvn.com
nvtjl@yahoo.com

Web Site : www.innogrindvn.com
